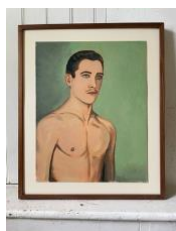


Upstate Art Weekend
Gatherwild Ranch
in collaboration with David B. Smith Gallery

Pole Barn



Laurie Henzel
Claude, 2023
Oil on paper
15.5 x 12 in. (39.4 x 30.5 cm)
(LH 25196)



Laurie Henzel
Cherry Blossom Clinic, 2025
Oil on canvas
24 x 18 in. (61 x 45.7 cm), framed
(LH 25195)



Calliope Jacobsen
Untitled, 2025
Acrylic on panel
10 in. dia. (25.4 cm)
(CJ 25217)



Paul Jacobsen
Wormhole, 2025
Watercolor pencil on paper mounted to aluminum
in airbrushed artist frame
11 x 9 in. (27.9 x 22.9 cm)
(PJ 25204)



Paul Jacobsen
Undercurrent, 2025
Watercolor pencil on paper mounted to aluminum
in airbrushed artist frame
11 x 9 in. (27.9 x 22.9 cm)
(PJ 25203)



Paul Jacobsen

The Pod, 2025

Watercolor pencil on paper mounted to aluminum
in airbrushed artist frame
11 x 9 in. (27.9 x 22.9 cm)
(PJ 25202)



Paul Jacobsen

Gobstopper, 2025

Watercolor pencil on paper mounted to aluminum
in airbrushed artist frame
11 x 9 in. (27.9 x 22.9 cm)
(PJ 25197)



Paul Jacobsen

Seven, 2025

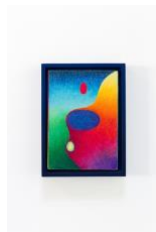
Watercolor pencil on paper mounted to aluminum
in airbrushed artist frame
11 x 9 in. (27.9 x 22.9 cm)
(PJ 25200)



Paul Jacobsen

Night Bloom, 2025

Watercolor pencil on paper mounted to aluminum
in airbrushed artist frame
8 x 6 in. (20.3 x 15.2 cm)
(PJ 25199)



Paul Jacobsen

Rainbow Membrane, 2025

Watercolor pencil on paper mounted to aluminum
in airbrushed artist frame
8 x 6 in. (20.3 x 15.2 cm)
(PJ 25198)



Paul Jacobsen

Compost, 2022

Oil on linen
36 x 30 in. (91.4 x 76.2 cm)
(PJ 25201)



Paul Jacobsen
Spirit Level, 2023
Oil on linen in pine frame
40 x 30 in. (101.6 x 76.2 cm)
43.5 x 33.5 in. (110.5 x 85.1 cm)
(PJ 25193)



Paul Jacobsen
Three Things, 2023
Oil on line and pine
40 x 36 in. (101.6 x 91.4 cm)
(PJ 25194)



Molly Lowe
Swim, 2022
Oil on linen
71 x 51 in. (180.3 x 129.5 cm)
(ML 25222)



Molly Lowe
Wrestle in the Sheets, 2022
Acrylic on foam coated fabric
62 x 46 in. (157.5 x 116.8 cm)
(ML 25221)



Molly Lowe
Princess, 2025
Oil on canvas
24 x 18 in. (61 x 45.7 cm)
(ML 25219)



Molly Lowe
Rescued, 2025
Oil on canvas
48 x 36 in. (121.9 x 91.4 cm)
(ML 25220)



Paco Rodriguez

Gatherwild Garnish, 2025

Foliage and natural materials from Gatherwild Ranch

Dimensions variable

(PR 25218)



Susan Wick

Hey There!, 1996

Acrylic and oil pastel on tissue paper

8 x 13 in. (20.3 x 33 cm)

(SW 25207)



Susan Wick

Birds of a Feather Fly Together, 1996

Acrylic on tissue paper

8 x 13 in. (20.3 x 33 cm)

(SW 25210)



Susan Wick

Cactus City, 1996

Acrylic on tissue paper

13 x 8 in. (33 x 20.3 cm)

(SW 25205)



Susan Wick

New York New York!, 1996

Acrylic on tissue paper

13 x 8 in. (33 x 20.3 cm)

(SW 25209)



Susan Wick

Perfect: Golden Night, 1996

Acrylic and ink on tissue paper

8 x 13 in. (20.3 x 33 cm)

(SW 25208)



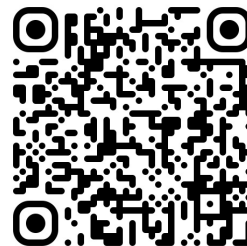
Susan Wick

Arizona Night, 1996

Acrylic on tissue paper

8 x 13 in. (20.3 x 33 cm)

(SW 25206)



Upstate Art Weekend
Gatherwild Ranch
in collaboration with David B. Smith Gallery

Dutch Barn



Brett Cody Rogers, Paul Jacobsen
The Wild God of MacArthur Park (Prometheus, Bringing Fire to Earth, after Nína Sæmundsson), 2025
Oil on canvas



Brett Cody Rogers
Prometheus, Bringing Fire to Earth by Nína Sæmundsson, MacArthur Park, 2025
Archival pigment print on Hahnemuhle Photo Rag Baryta
22 x 17 in. (55.9 x 43.2 cm)
24 x 24 in. (61 x 61 cm), framed



Brett Cody Rogers
Proposal for the Lost Head of Nína Sæmundsson 7, 2021
Archival pigment print on Canson Arches 88
19 x 13 in. (48.3 x 33 cm)
32.5 x 35.75 in. (82.6 x 90.8 cm), framed



Brett Cody Rogers
Proposal for the Lost Head of Nína Sæmundsson 4, 2021
Archival pigment print on Canson Arches 88
19 x 13 in. (48.3 x 33 cm)
32.5 x 35.75 in. (82.6 x 90.8 cm), framed



Brett Cody Rogers
Proposal for the Lost Head of Nína Sæmundsson 2, 2021
Archival pigment print on Canson Arches 88
19 x 13 in. (48.3 x 33 cm)
32.5 x 35.75 in. (82.6 x 90.8 cm), framed



Brett Cody Rogers

Proposal for the Lost Head of Nina Sæmundsson 3, 2021

Archival pigment print on Canson Arches 88

19 x 13 in. (48.3 x 33 cm)

32.5 x 35.75 in. (82.6 x 90.8 cm), framed

Edition 1/5, 2 AP

(BCR 25211)



Brett Cody Rogers, Paul Jacobsen

Measure of Man, 2025

LC4 chair, pedestal, rug, 16 ton pipe bender and

components, chrome painted steel pipe, Bardwell & McAlister

Fresnel spotlight on rolling stand, wheelbarrow, and hardhat

Dimensions variable

(BCR 25223)



Brett Cody Rogers, Paul Jacobsen

Model in Recline, 2025

Fujifilm FP-3000b instant photograph and negative

4.25 x 3.25 in. (10.8 x 8.3 cm) each

4.25 x 8 in. (10.8 x 20.3 cm) overall

(BCR 25224)