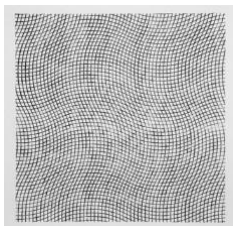


Chris Oatey and Dylan Gebbia-Richards

January 20 — February 18, 2017



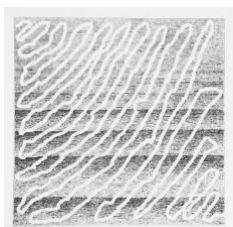
Chris Oatey

The tide is high (and rising) 3, 2016

Carbon on paper

25 x 25 in. (63.5 x 63.5 cm)

25.5 x 25.5 in. (64.8 x 64.8 cm), framed
(CO 1609)



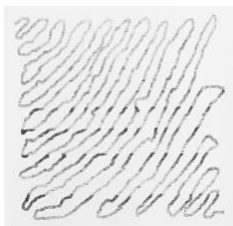
Chris Oatey

The tide is high (and rising), 2016

Carbon on paper

25 x 25 in. (63.5 x 63.5 cm)

25.5 x 25.5 in. (64.8 x 64.8 cm), framed
(CO 1607)



Chris Oatey

The tide is high (and rising) 2, 2016

Carbon on paper

25 x 25 in. (63.5 x 63.5 cm)

25.5 x 25.5 in. (64.8 x 64.8 cm), framed
(CO 1608)



Dylan Gebbia-Richards

Fall From Grace, 2016

Paraffin wax on panel

84 x 84 x 7 in. (213.4 x 213.4 x 17.8 cm)
(DG 1602)

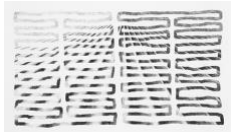


Dylan Gebbia-Richards

In Night, 2016

Paraffin wax on panel

84 x 84 x 7 in. (213.4 x 213.4 x 17.8 cm)
(DG 1601)



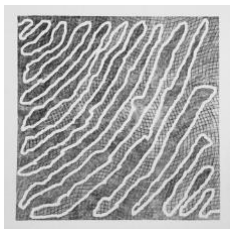
Chris Oatey

Corduroy 2, 2016

Carbon on paper

20 x 25 in. (50.8 x 63.5 cm)

21.25 x 27.25 in. (54 x 69.2 cm), framed
(CO 1603)



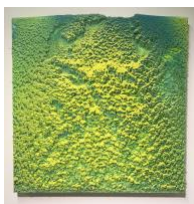
Chris Oatey
The tide is high (and rising) 4, 2016
Carbon on paper
25 x 25 in. (63.5 x 63.5 cm)
25.5 x 25.5 in. (64.8 x 64.8 cm), framed
(CO 1610)



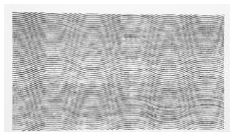
Chris Oatey
Corduroy 5, 2016
Carbon on paper
20 x 25 in. (50.8 x 63.5 cm)
21.25 x 27.25 in. (54 x 69.2 cm), framed
(CO 1606)



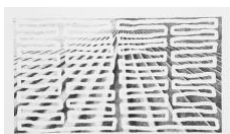
Dylan Gebbia-Richards
Everything in It's Right Place, 2016
Paraffin wax on panel
36 x 36 x 4.25 in. (91.4 x 91.4 x 10.8 cm)
(DG 1703)



Dylan Gebbia-Richards
Oscillate, 2016
Paraffin wax on panel
48 x 48 x 4.75 in. (121.9 x 121.9 x 12.1 cm)
(DG 1704)



Chris Oatey
Corduroy 3, 2016
Carbon on paper
20 x 25 in. (50.8 x 63.5 cm)
21.25 x 27.25 in. (54 x 69.2 cm), framed
(CO 1604)



Chris Oatey
Corduroy, 2016
Carbon on paper
20 x 25 in. (50.8 x 63.5 cm)
21.25 x 27.25 in. (54 x 69.2 cm), framed
(CO 1602)